

USDA Foreign Agricultural Service

GAIN Report

Global Agricultural Information Network

THIS REPORT CONTAINS ASSESSMENTS OF COMMODITY AND TRADE ISSUES MADE BY
USDA STAFF AND NOT NECESSARILY STATEMENTS OF OFFICIAL U.S. GOVERNMENT
POLICY

Required Report - public distribution

Date: 10/26/2012

GAIN Report Number:

Argentina

Oilseeds and Products Update

Lock-up Report

Approved By:

Melinda Sallyards

Prepared By:

Brooke Markley

Report Highlights:

Soybean area and production for marketing year 2012/13 are maintained at 19.7 million hectares and 55 million metric tons, respectively, in-line with official USDA estimates. Planting has been delayed due to excessive moisture this season. Area for sunflower is adjusted downward to 1.8 million hectares, 200,000 ha less than the USDA official estimate, based on official estimates from the Ministry of Agriculture and the Buenos Aires Grain Exchange.

Post:

Buenos Aires

Commodities:

Oilseed, Soybean (Local)

Meal, Soybean (Local)

Oil, Soybean (Local)

Oilseed, Sunflowerseed

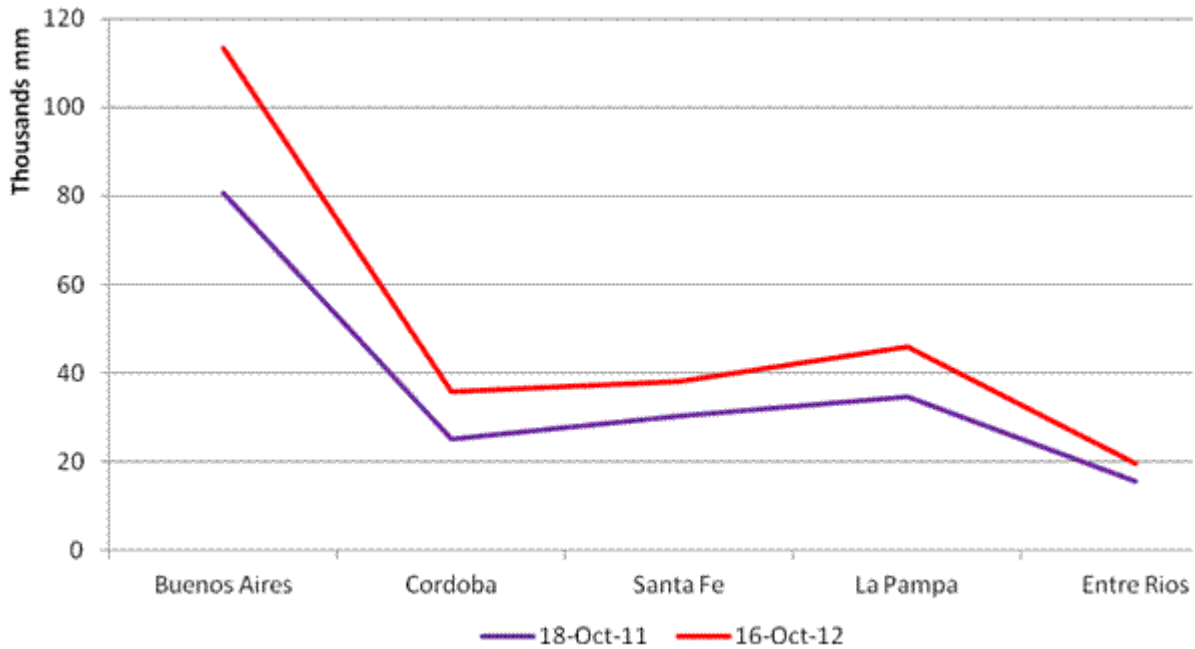
Meal, Sunflowerseed

Oil, Sunflowerseed

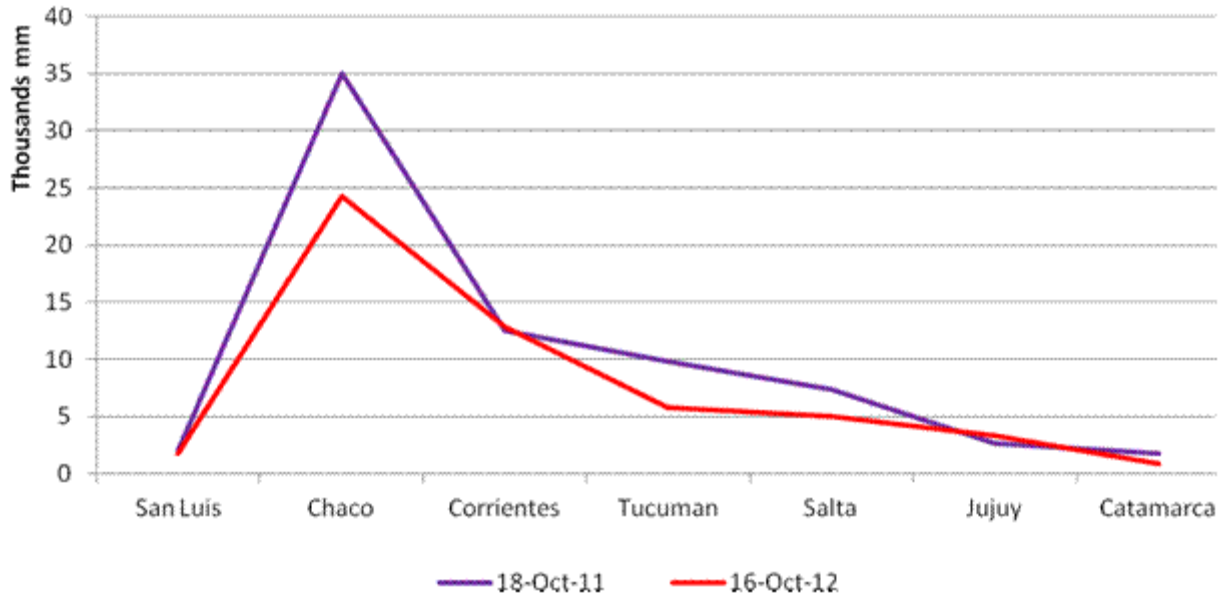
Author Defined:**Soybeans:**

Lots of rain continues to be the theme this season. Many producers are still waiting until the fields dry out a bit before they can get in and start planting in the main growing region. Although, some planting has begun in the marginal areas and in the northern provinces where too much rain hasn't been the issue. Soybean area for marketing year 2012/13 is estimated at 19.7 million hectares. Although many sources believe this number could rise as the season goes on. However, if rains continue, in the end, the total area could be less if flooded fields are unable to be planted. It is still too early to tell and there is plenty of time for producers to start planting. Production remains steady at 55 million metric tons based on average yields. Many contacts expect there may be problems with diseases and pests due to the humid conditions and also expect costs of production to increase in order to control these conditions.

The charts below depict cumulative annual rainfall by province year-to-date comparing last year with this year. As you can see, in the first chart, there has been substantially more rainfall this year compared to last. These provinces historically represent more than 85 percent of the soybean production area. The second chart shows rainfall in the northern provinces and more marginal growing regions. This year there is less rain than the previous year.



Source: Ministry of Agriculture weekly report, October 18, 2012



Source: Ministry of Agriculture weekly report, October 18, 2012

For MY2012/2013, post estimates exports to be lower than the USDA official estimate, 11 MMT compared to 12.325 MMT. Since there have been policy changes from the government with the goal to

provide incentive to the crushing industry and promote crushing at full capacity, it is likely that more soybeans will be crushed in the coming year (for more information, see policy section of [September's Oilseeds and Products Update](#)). Post maintains its crush estimate at 42 MMT (2.7 MMT above the USDA official number). Soybean oil and meal production are also up, based on the increased crush estimate.

Sunflowerseed:

Sunflowerseed planting is 36 percent complete according to the Ministry of Agriculture's most recent weekly report. Total area for sunflowerseed is lowered by 200,000 hectares to 1.8 million hectares. Since there has been so much rain, producers in some of the traditional sunflowerseed areas of the Buenos Aires province have decided to wait to plant either corn or soybeans instead. There are also lingering fears of parrot and pigeon damage as seen in previous years and with a wet summer, the rains could have a negative effect on pollination. Production is adjusted accordingly based on average yields to 3.6 million metric tons.

Planting Progress, October 18, 2012						
Sunflowerseed						
Province	Local Marketing Year				Area Planted From:	
	11/12	12/13	11/12	12/13	10/11/12	10/18/12
	Percentage		Hectares		Percentage	
Buenos Aires	20	6	190,705	52,260	0	6
Córdoba	10	13	4,001	5,280	10	13
Entre Ríos	76	67	6,548	6,380	67	67
La Pampa	5	2	17,014	4,170	0	2
Santa Fe	99	99	179,750	181,000	99	99
Other	82	91	233,298	395,600	90	91
Total	34%	36%	631,316	644,690	32%	36%

Source: MAGyP, Weekly Report, 10/18/2012

Peanuts:

There are no changes for peanut production this month.

Oilseed, Soybean (Local) Argentina	2010/2011		2011/2012		2012/2013	
	Market Year Begin: Apr 2011		Market Year Begin: Apr 2012		Market Year Begin: Apr 2013	
	USDA Official	New Post	USDA Official	New Post	USDA Official	New Post
Area Planted	18,300	18,300	18,600	18,600	19,700	19,700
Area Harvested	18,300	18,300	17,500	17,500	19,700	19,700
Beginning Stocks	4,507	4,507	4,022	4,010	2,522	2,010
Production	49,000	49,000	41,000	41,000	55,000	55,000
MY Imports	13	13	0	0	0	0
MY Imp. from U.S.	0	0	0	0	0	0
MY Imp. from EU	0	0	0	0	0	0
Total Supply	53,520	53,520	45,022	45,010	57,522	57,010
MY Exports	10,389	10,389	6,300	6,500	12,325	11,000
MY Exp. to EU	35	35	35	35	50	100
Crush	37,509	37,521	34,700	35,000	39,300	42,000
Food Use Dom. Cons.	0	0	0	0	0	0
Feed Waste Dom. Cons.	1,600	1,600	1,500	1,500	1,650	1,650
Total Dom. Cons.	39,109	39,121	36,200	36,500	40,950	43,650
Ending Stocks	4,022	4,010	2,522	2,010	4,247	2,360
Total Distribution	53,520	53,520	45,022	45,010	57,522	57,010
1000 HA, 1000 MT						

Meal, Soybean (Local) Argentina	2010/2011		2011/2012		2012/2013	
	Market Year Begin: Apr 2011		Market Year Begin: Apr 2012		Market Year Begin: Apr 2012	
	USDA Official	New Post	USDA Official	New Post	USDA Official	New Post
Crush	37,509	37,521	34,700	35,000	39,300	42,000
Extr. Rate, 999.9999	1	1	1	1	1	1
Beginning Stocks	2,532	2,891	3,501	3,862	3,136	3,392
Production	29,181	29,183	27,100	27,290	30,625	32,750
MY Imports	0	0	0	0	0	0
MY Imp. from U.S.	0	0	0	0	0	0
MY Imp. from EU	0	0	0	0	0	0
Total Supply	31,713	32,074	30,601	31,152	33,761	36,142
MY Exports	27,485	27,485	26,700	27,000	29,980	32,500
MY Exp. to EU	12,658	12,658	12,700	12,700	13,200	15,000
Industrial Dom. Cons.	0	0	0	0	0	0
Food Use Dom. Cons.	0	0	0	0	0	0
Feed Waste Dom. Cons.	727	727	765	760	770	770
Total Dom. Cons.	727	727	765	760	770	770
Ending Stocks	3,501	3,862	3,136	3,392	3,011	2,872
Total Distribution	31,713	32,074	30,601	31,152	33,761	36,142
1000 MT, PERCENT						

Oil, Soybean (Local) Argentina	2010/2011		2011/2012		2012/2013	
	Market Year Begin: Apr 2011		Market Year Begin: Apr 2012		Market Year Begin: May 2012	
	USDA Official	New Post	USDA Official	New Post	USDA Official	New Post
Crush	37,509	37,521	34,700	35,000	39,300	42,000
Extr. Rate, 999.9999	0	0	0	0	0	0
Beginning Stocks	225	225	391	238	191	78
Production	7,148	7,148	6,610	6,670	7,485	8,000
MY Imports	0	0	0	0	0	0
MY Imp. from U.S.	0	0	0	0	0	0
MY Imp. from EU	0	0	0	0	0	0
Total Supply	7,373	7,373	7,001	6,908	7,676	8,078
MY Exports	4,227	4,300	3,790	3,790	4,035	4,500
MY Exp. to EU	275	425	300	300	350	435
Industrial Dom. Cons.	2,385	2,450	2,650	2,650	3,000	3,000
Food Use Dom. Cons.	370	385	370	390	371	400
Feed Waste Dom. Cons.	0	0	0	0	0	0
Total Dom. Cons.	2,755	2,835	3,020	3,040	3,371	3,400
Ending Stocks	391	238	191	78	270	178
Total Distribution	7,373	7,373	7,001	6,908	7,676	8,078
1000 MT, PERCENT						

Oilseed, Sunflowerseed Argentina	2010/2011		2011/2012		2012/2013	
	Market Year Begin: Mar 2011		Market Year Begin: Mar 2012		Market Year Begin: May 2012	
	USDA Official	New Post	USDA Official	New Post	USDA Official	New Post
Area Planted	1,740	1,740	1,850	1,875	2,000	1,800
Area Harvested	1,740	1,740	1,823	1,875	2,000	1,875
Beginning Stocks	242	242	110	315	52	217
Production	3,670	3,670	3,340	3,600	4,000	3,600
MY Imports	9	10	20	20	20	20
MY Imp. from U.S.	0	0	0	0	0	0
MY Imp. from EU	0	0	0	0	0	0
Total Supply	3,921	3,922	3,470	3,935	4,072	3,837
MY Exports	74	70	65	65	65	65
MY Exp. to EU	26	20	20	20	20	20
Crush	3,680	3,480	3,300	3,600	3,700	3,500
Food Use Dom. Cons.	0	0	0	0	0	0
Feed Waste Dom. Cons.	57	57	53	53	53	55
Total Dom. Cons.	3,737	3,537	3,353	3,653	3,753	3,555
Ending Stocks	110	315	52	217	254	217
Total Distribution	3,921	3,922	3,470	3,935	4,072	3,837
1000 HA, 1000 MT						

Meal, Sunflowerseed Argentina	2010/2011		2011/2012		2012/2013	
	Market Year Begin: Mar 2011		Market Year Begin: Mar 2012		Market Year Begin: May 2012	
	USDA Official	New Post	USDA Official	New Post	USDA Official	New Post
Crush	3,680	3,480	3,300	3,600	3,700	3,500
Extr. Rate, 999.9999	0	0	0	0	0	0
Beginning Stocks	45	45	193	100	138	130
Production	1,632	1,552	1,450	1,600	1,625	1,570
MY Imports	0	0	0	0	0	0
MY Imp. from U.S.	0	0	0	0	0	0
MY Imp. from EU	0	0	0	0	0	0
Total Supply	1,677	1,597	1,643	1,700	1,763	1,700
MY Exports	745	758	730	800	900	800
MY Exp. to EU	390	500	390	500	400	500
Industrial Dom. Cons.	0	0	0	0	0	0
Food Use Dom. Cons.	0	0	0	0	0	0
Feed Waste Dom. Cons.	739	739	775	770	725	800
Total Dom. Cons.	739	739	775	770	725	800
Ending Stocks	193	100	138	130	138	100
Total Distribution	1,677	1,597	1,643	1,700	1,763	1,700
1000 MT, PERCENT						

Oil, Sunflowerseed Argentina	2010/2011		2011/2012		2012/2013	
	Market Year Begin: Mar 2011		Market Year Begin: Mar 2012		Market Year Begin: Mar 2013	
	USDA Official	New Post	USDA Official	New Post	USDA Official	New Post
Crush	3,680	3,480	3,300	3,600	3,700	3,500
Extr. Rate, 999.9999	0	0	0	0	0	0
Beginning Stocks	308	311	427	405	330	90
Production	1,551	1,462	1,367	1,525	1,525	1,470
MY Imports	0	0	0	0	0	0
MY Imp. from U.S.	0	0	0	0	0	0
MY Imp. from EU	0	0	0	0	0	0
Total Supply	1,859	1,773	1,794	1,930	1,855	1,560
MY Exports	978	906	980	1,350	1,050	1,000
MY Exp. to EU	200	270	170	270	170	270
Industrial Dom. Cons.	2	2	2	0	2	0
Food Use Dom. Cons.	437	445	467	475	500	475
Feed Waste Dom. Cons.	15	15	15	15	15	15
Total Dom. Cons.	454	462	484	490	517	490
Ending Stocks	427	405	330	90	288	70
Total Distribution	1,859	1,773	1,794	1,930	1,855	1,560
1000 MT, PERCENT						