

USDA Foreign Agricultural Service

GAIN Report

Global Agricultural Information Network

THIS REPORT CONTAINS ASSESSMENTS OF COMMODITY AND TRADE ISSUES MADE BY
USDA STAFF AND NOT NECESSARILY STATEMENTS OF OFFICIAL U.S. GOVERNMENT
POLICY

Voluntary - Public

Date: 9/6/2018

GAIN Report Number: UP1816

Ukraine

Post: Kiev

Soybean Update

Report Categories:

Oilseeds and Products

Approved By:

Robin Gray, Agricultural Attaché

Prepared By:

Denys Sobolev, Agricultural Specialist

Report Highlights:

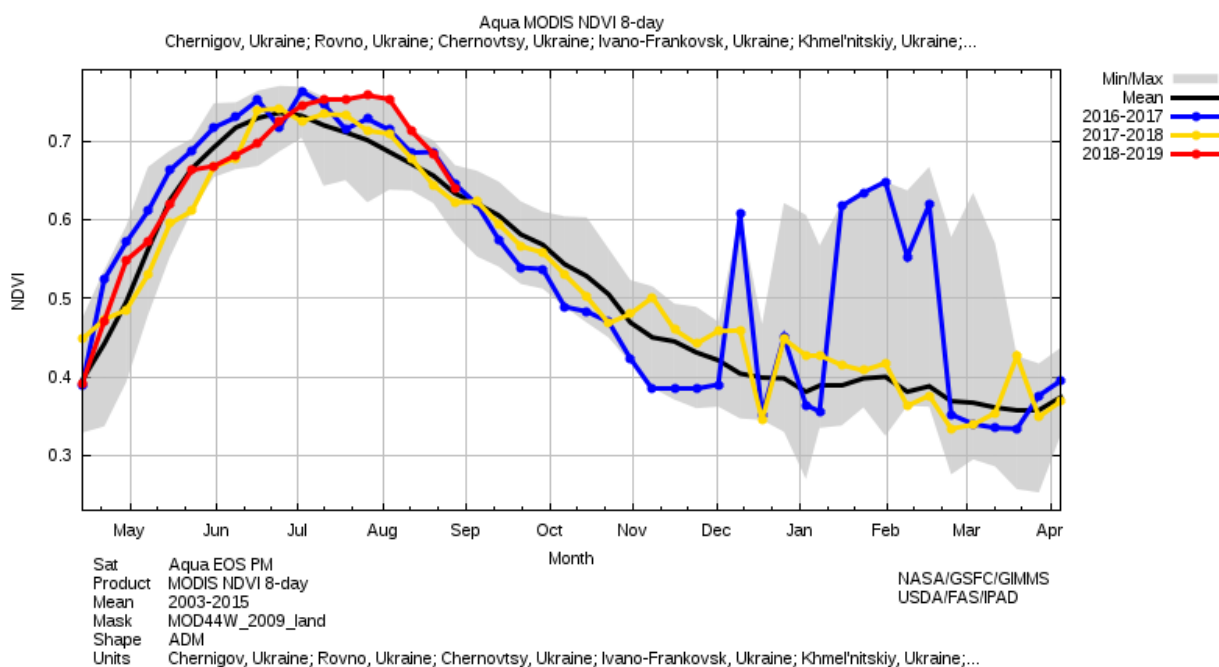
This report contains revised production, consumption and trade forecasts for MY2018/19 as the result of recent legislative amendments as well as trade estimates for MY2017/18.

General Information:

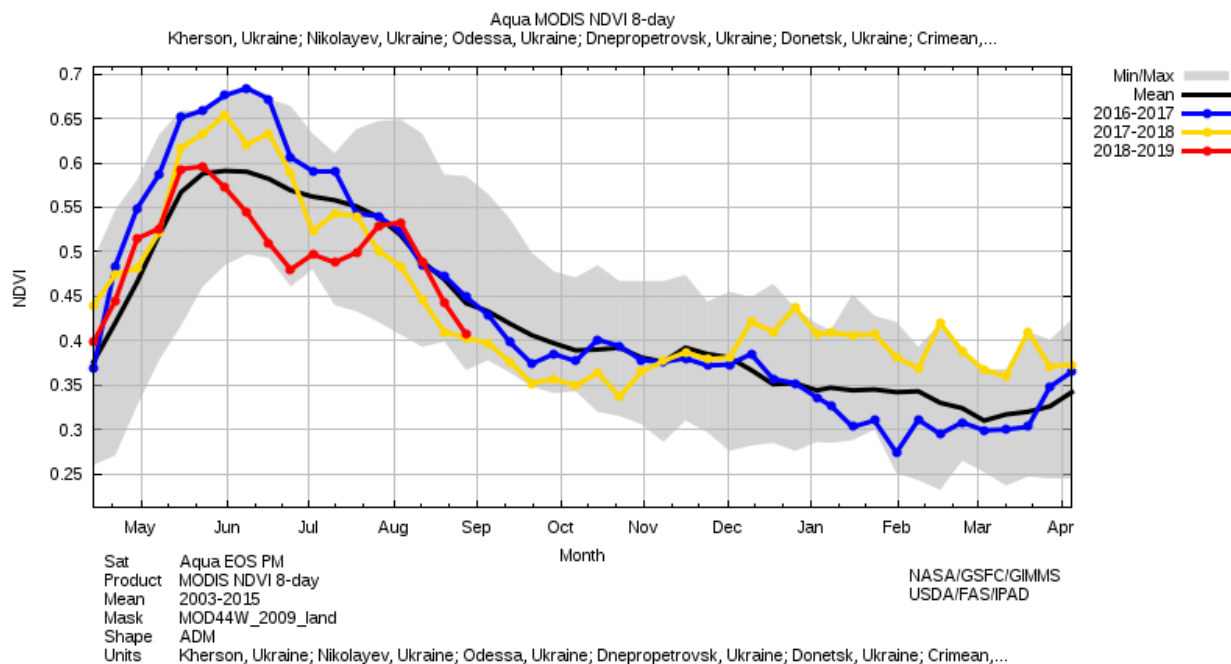
For a more comprehensive outlook of the Ukrainian oilseeds market, please refer to our [Annual Oilseeds Report](#). This report focuses solely on forecasted changes in production and processing of soybeans and products of processing thereof (soybean oil and meal) for both MY2018/19 and updating trade estimates for MY2017/18.

As of June 5, 2018, the Ministry of Agricultural Policy and Food of Ukraine (MAPF) reported planted soybean area around 1750 thousand hectares (ha), a seven-percent decrease compared to 2017. FAS-Kyiv uses this number as the baseline for forecasting soybean production for MY2018/19.

The graphs below depict the vegetative development index (NDVI) as of the second half of August 2018. The first graph depicts NDVI dynamics for the Forest-Steppe and Polissya regions. These account for almost 85 percent of total soybean production areas in Ukraine. The growing conditions were favorable from the beginning of the growing season until the end of July and very favorable from July until September 2018.



The second graph depicts NDVI dynamics for Steppe region accounting for around 15 percent of total soybean production areas in Ukraine. The growing conditions were less favorable due to low levels of soil moisture and the lack of precipitation for the growing season.



Based on the abovementioned climate data FAS-Kyiv upgraded MY2018/19 soybean yields against the initial estimates included in our [Annual Oilseeds Report](#). The resulting numbers are included in Production, Supply and Distribution (PSD) Data section below.

MY2107/18 export and import numbers have been revised based on the available trade data (please refer to Author Defined Section at the end of the report for more details).

On September 1, 2018 amendments to the Tax Code ([in Ukrainian](#)) have been enacted into the law. They restore exclusive ability of farmers who grew these crops on their own or rented land to claim an export VAT refund for soybeans and rapeseed. For information about the previous tax policy and its forecasted implications to soybean balances, please refer to Policy section of our [Annual Oilseeds Report](#).

FAS-Kyiv considers that the mentioned change in tax policy would stimulate farmers to export their soybeans directly, subsequently undercutting the bargaining power of domestic processors at the beginning of MY2018/19. According to industry sources, large farmers with the ability to accumulate export-size batches on their silos would be effectively buying soybeans from their small-scale neighbors and exporting as their own. Although, this may have a negative financial impact on international grain traders, the Post does not believe this would affect soybean export projections.

FAS-Kyiv believes this justifies an increase in the soybean export forecast and subsequently a decrease in the crush forecast for MY2018/19, compared to our initial estimates. The respective amendments have been included relevant PSD tables for soybean oil and meal. Changes in soybean crush lead to subsequent changes in production and export numbers for these commodities.

Production, Supply and Distribution Data Statistics:

Oilseed, Soybean Market Begin Year	2016/2017		2017/2018		2018/2019	
	Sep 2016		Sep 2017		Sep 2018	
	USDA Official	New Post	USDA Official	New Post	USDA Official	New Post
Ukraine						
Area Planted	2300	1846	2100	2000	2000	1800
Area Harvested	1858	1853	1976	1982	1850	1750
Beginning Stocks	113	113	151	146	45	52
Production	4286	4280	3890	3899	4200	3850
MY Imports	7	7	5	8	5	7
MY Imp. from U.S.	0	0	0	0	0	0
MY Imp. from EU	0	0	0	1	0	0
Total Supply	4406	4400	4046	4053	4250	3909
MY Exports	2904	2903	2700	2700	2950	2450
MY Exp. to EU	620	619	600	900	600	950
Crush	800	850	900	900	850	950
Food Use Dom. Cons.	1	1	1	1	1	1
Feed Waste Dom. Cons.	550	500	400	400	400	420
Total Dom. Cons.	1351	1351	1301	1301	1251	1371
Ending Stocks	151	146	45	52	49	88
Total Distribution	4406	4400	4046	4053	4250	3909
CY Imports	0	10	0	7	0	7
CY Imp. from U.S.	0	0	0	0	0	0
CY Exports	2867	2866	2700	2700	2900	2450
CY Exp. to U.S.	0	0	0	0	0	0
Yield	2.3068	2.3098	1.9686	1.9672	2.2703	2.2
(1000 HA) ,(1000 MT) ,(MT/HA)						

Oil, Soybean Market Begin Year	2016/2017		2017/2018		2018/2019	
	Sep 2016		Sep 2017		Sep 2018	
	USDA Official	New Post	USDA Official	New Post	USDA Official	New Post
Ukraine						
Crush	800	850	900	900	850	950
Extr. Rate, 999.9999	0.1825	0.1824	0.1833	0.1822	0.1835	0.1832
Beginning Stocks	40	40	6	12	0	6
Production	146	155	165	164	156	174
MY Imports	0	0	0	0	0	0
MY Imp. from U.S.	0	0	0	0	0	0
MY Imp. from EU	0	0	0	0	0	0
Total Supply	186	195	171	176	156	180
MY Exports	177	177	170	165	155	170
MY Exp. to EU	80	71	80	70	80	70
Industrial Dom. Cons.	0	0	0	0	0	0
Food Use Dom. Cons.	3	6	1	5	1	5
Feed Waste Dom. Cons.	0	0	0	0	0	0
Total Dom. Cons.	3	6	1	5	1	5
Ending Stocks	6	12	0	6	0	5
Total Distribution	186	195	171	176	156	180

(1000 MT) ,(PERCENT)						
Meal, Soybean Market Begin Year	2016/2017		2017/2018		2018/2019	
	Sep 2016		Sep 2017		Sep 2018	
	USDA Official	New Post	USDA Official	New Post	USDA Official	New Post
Ukraine						
Crush	800	850	900	900	850	950
Extr. Rate, 999.9999	0.79	0.7847	0.79	0.7844	0.7906	0.7842
Beginning Stocks	71	71	162	93	180	82
Production	632	667	711	706	672	745
MY Imports	2	2	2	3	2	2
MY Imp. from U.S.	0	0	0	0	0	0
MY Imp. from EU	0	1	0	1	0	1
Total Supply	705	740	875	802	854	829
MY Exports	303	297	375	360	400	390
MY Exp. to EU	115	108	100	100	100	100
Industrial Dom. Cons.	0	0	0	0	0	0
Food Use Dom. Cons.	0	0	0	0	0	0
Feed Waste Dom. Cons.	240	350	320	360	300	360
Total Dom. Cons.	240	350	320	360	300	360
Ending Stocks	162	93	180	82	154	79
Total Distribution	705	740	875	802	854	829
(1000 MT) ,(PERCENT)						

Author Defined:

Soybeans Export Statistics by Month and Destination, 1000 MT, Ukraine (HS 1201)

Destination	MY 2016/17	Sep 2016 - Jun 2017	Sep-17	Oct-17	Nov-17	Dec-17	Jan-18	Feb-18	Mar-18	Apr-18	May-18	Jun-18	Sep 2017 - June 2018	% Change Sep 2017 - Jun 2018 to Sep 2016 - Jun 2017
World	2,903.5	2,809.5	37.0	245.9	518.2	424.4	421.1	340.8	266.8	210.9	144.9	78.5	2,688.5	-4.3
Middle East	1,535.5	1,493.1	15.0	124.1	268.0	148.7	224.4	170.4	109.0	107.3	91.0	28.9	1,286.9	-13.8
Eurasian Economic Union	119.7	112.7	6.6	14.3	24.1	36.0	46.4	25.6	36.1	30.0	16.8	27.5	263.3	133.7
EU-28	619.4	580.1	15.4	93.1	131.3	178.8	106.2	109.5	86.5	54.1	33.8	20.4	829.1	42.9
Africa	604.9	599.9	0.0	12.6	94.5	60.3	43.8	35.0	34.3	19.4	2.9	1.7	304.6	-49.2
East & Southeast Asia	22.3	22.2	0.0	1.8	0.3	0.3	0.0	0.3	0.0	0.0	0.4	0.0	3.1	-85.8
Belarus	119.7	112.6	6.6	14.3	24.1	36.0	46.4	25.6	36.1	30.0	16.8	27.5	263.3	133.7
Turkey	748.5	716.3	15.0	66.8	132.2	105.4	78.9	107.5	78.6	82.7	51.2	22.2	740.7	3.4
Greece	124.7	118.2	0.0	5.5	13.2	12.6	25.0	17.0	15.1	6.4	0.0	13.2	108.0	-8.6
Lebanon	67.6	57.4	0.0	0.0	40.4	14.8	41.3	10.3	5.1	24.6	18.4	6.7	161.6	181.5
Poland	84.5	70.4	14.9	19.8	12.3	18.4	6.0	6.6	5.0	7.1	3.7	3.6	97.4	38.3
Egypt	567.2	562.5	0.0	12.6	94.5	60.3	38.0	35.0	28.8	19.4	2.9	1.7	293.3	-47.9
Italy	141.6	129.6	0.0	23.5	0.0	51.7	26.7	39.9	4.9	12.8	16.4	1.2	177.1	36.6
Hungary	6.4	6.3	0.0	5.1	6.4	11.6	15.9	9.8	5.1	4.4	4.2	1.0	63.5	906.3
Germany	13.2	12.9	0.0	6.0	9.7	9.1	11.4	9.9	10.1	7.5	1.8	0.8	66.3	412.7
Lithuania	3.9	3.9	0.5	2.8	5.4	1.5	6.0	1.9	0.8	0.4	0.5	0.5	20.2	414.4
Moldova	0.2	0.2	0.0	0.0	0.0	0.0	0.0	0.0	0.0	0.0	0.0	0.0	0.1	-70.6
Morocco	11.9	11.9	0.0	0.0	0.0	0.0	0.0	0.0	0.0	0.0	0.0	0.0	0.0	-100.0
Netherlands	52.7	46.4	0.0	30.3	84.3	37.9	14.9	21.0	30.0	0.0	0.0	0.0	218.3	370.8
Turkmenistan	1.5	1.3	0.0	0.0	0.0	0.2	0.2	0.0	0.8	0.0	0.0	0.0	1.2	-7.0
United Arab Emirates	15.7	15.7	0.0	0.0	0.0	0.0	0.0	0.0	0.0	0.0	0.0	0.0	0.0	-100.0
United Kingdom	0.5	0.5	0.0	0.0	0.0	0.0	0.0	0.0	0.0	0.0	0.0	0.0	0.0	-99.8
Portugal	30.0	30.0	0.0	0.0	0.0	0.0	0.0	0.0	0.0	0.0	0.0	0.0	0.0	-100.0
Romania	2.0	2.0	0.0	0.0	0.0	0.0	0.0	0.0	0.0	0.0	0.0	0.0	0.1	-96.5
Serbia	0.0	0.0	0.0	0.0	0.0	0.1	0.2	0.0	0.0	0.0	0.0	0.0	0.3	∞
Slovakia	0.0	0.0	0.0	0.0	0.0	0.0	0.0	0.0	0.0	0.0	0.0	0.0	0.0	-100.0
Spain	66.3	66.3	0.0	0.0	0.0	19.0	0.0	0.0	15.2	15.0	0.0	0.0	49.3	-25.7
Switzerland	0.9	0.9	0.0	0.0	0.0	0.6	0.4	1.3	0.3	0.4	6.3	0.0	9.3	906.0
Syria	10.4	10.4	0.0	0.0	0.0	0.0	0.0	0.0	0.0	0.0	0.0	0.0	0.0	-100.0
Tajikistan	0.0	0.0	0.0	0.0	0.0	0.0	0.0	0.0	0.0	0.0	0.0	0.0	0.0	∞
Tunisia	25.6	25.6	0.0	0.0	0.0	0.0	5.8	0.0	5.5	0.0	0.0	0.0	11.3	-55.8
Iran	583.0	583.0	0.0	56.2	69.7	28.5	104.0	51.9	25.3	0.0	19.9	0.0	355.5	-39.0
Iraq	0.0	0.0	0.0	0.0	0.0	0.0	0.0	0.0	0.0	0.0	0.0	0.0	0.0	∞
Israel	99.7	99.7	0.0	0.0	25.8	0.0	0.0	0.0	0.0	0.0	0.0	0.0	25.8	-74.1
Japan	0.0	0.0	0.0	0.0	0.0	0.0	0.0	0.0	0.0	0.0	0.0	0.0	0.0	0.0
Kazakhstan	0.0	0.0	0.0	0.0	0.0	0.0	0.0	0.0	0.0	0.0	0.0	0.0	0.0	-100.0
Korea North	2.4	2.4	0.0	0.0	0.3	0.0	0.0	0.0	0.0	0.0	0.4	0.0	0.7	-71.6
Kuwait	0.2	0.2	0.0	0.0	0.0	0.0	0.0	0.0	0.0	0.0	0.0	0.0	0.0	-88.6
Kyrgyzstan	0.0	0.0	0.0	0.0	0.0	0.0	0.0	0.0	0.0	0.0	0.0	0.0	0.0	-100.0
France	0.0	0.0	0.0	0.0	0.0	0.0	0.0	0.0	0.0	0.0	0.0	0.0	0.0	∞
Georgia	10.4	10.4	0.0	1.1	0.0	0.0	0.0	0.7	0.0	0.0	0.0	0.0	1.8	-83.0
Angola	0.2	0.0	0.0	0.0	0.0	0.0	0.0	0.0	0.0	0.0	0.0	0.0	0.0	∞
Austria	5.2	5.2	0.0	0.0	0.0	0.0	0.0	0.3	0.0	0.0	0.9	0.0	1.2	-77.5
Azerbaijan	0.0	0.0	0.0	0.0	0.0	0.0	0.0	0.0	0.0	0.0	1.5	0.0	1.5	3,761.5
Belgium	0.0	0.0	0.0	0.0	0.0	16.4	0.0	0.0	0.0	0.0	0.0	0.0	16.4	∞
China	19.9	19.8	0.0	1.8	0.0	0.3	0.0	0.3	0.0	0.0	0.0	0.0	2.4	-87.6
Czech Republic	0.0	0.0	0.0	0.0	0.0	0.0	0.0	1.8	0.0	0.0	0.0	0.0	1.9	∞
Denmark	87.4	87.4	0.0	0.0	0.0	0.0	0.0	0.0	0.0	0.0	0.0	0.0	0.0	-100.0

Source: State Fiscal Service of Ukraine

Soybean Import Statistics by Month and Origin, Ukraine, MT (HS 1201)

Destination	MY 2016/17	Sep 2016- Jun 2017	Sep-17	Oct-17	Nov-17	Dec-17	Jan-18	Feb-18	Mar-18	Apr-18	May-18	Jun-18	Sep 2017 - June 2018	% Change Sep 2017 - Jun 2018 to Sep 2016 - Jun 2017
World	6,638	6,511	258	1,259	1,029	1,443	339	449	1,062	807	576	438	7,660	17.6
Eurasian Economic Union	4,512	4,385	0	1,259	782	1,293	258	190	119	342	412	367	5,022	14.5
EU-28	499	499	258	0	247	150	0	39	199	224	27	71	1,215	143.5
East & Southeast Asia	0	0	0	0	0	0	3	0	8	0	0	0	11	∞
Belarus	4,512	4,385	0	1,259	782	1,293	258	190	119	342	412	367	5,022	14.5
Poland	106	106	258	0	247	150	0	0	20	0	0	71	746	603.8
Romania	0	0	0	0	0	0	0	0	0	1	27	0	28	∞
Serbia	18	18	0	0	0	0	0	0	0	0	6	0	6	-66.7
Slovakia	0	0	0	0	0	0	0	0	0	22	0	0	22	∞
Switzerland	0	0	0	0	0	0	0	0	0	1	1	0	2	∞
United States	344	344	0	0	0	0	78	0	1	0	20	0	99	-71.2
Austria	66	66	0	0	0	0	0	0	173	114	0	0	287	334.8
Brazil	0	0	0	0	0	0	0	0	0	0	0	0	0	∞
Canada	1,265	1,265	0	0	0	0	0	220	735	241	111	0	1,307	3.3
China	0	0	0	0	0	0	3	0	8	0	0	0	11	∞
Czech Republic	149	149	0	0	0	0	0	39	5	10	0	0	54	-63.8
France	171	171	0	0	0	0	0	0	1	76	0	0	77	-55.0
Germany	6	6	0	0	0	0	0	0	0	0	0	0	0	-100.0
Italy	0	0	0	0	0	0	0	0	0	0	0	0	0	∞

Source: State Fiscal Service of Ukraine

Soybean Oil Export Statistics by Month and Destination, Ukraine, MT (HS 1507)

Destination	MY 2016/17	Sep 2016- Jun 2017	Sep-17	Oct-17	Nov-17	Dec-17	Jan-18	Feb-18	Mar-18	Apr-18	May-18	Jun-18	Sep 2017 - June 2018	% Change Sep 2017 - Jun 2018 to Sep 2016 - Jun 2017
World	177,046	148,014	9,093	12,400	11,164	11,498	21,010	19,450	19,620	21,261	16,969	14,282	156,747	5.9
East & Southeast Asia	54,610	40,108	2,931	4,594	4,094	3,749	597	1,102	8,321	7,251	6,392	7,091	46,122	15.0
EU-28	71,208	58,720	5,414	6,994	6,648	6,589	5,513	5,688	7,251	6,980	7,058	6,785	64,920	10.6
Middle East	13,469	11,887	0	0	0	947	6,986	5,486	3,193	6,648	2,394	239	25,893	117.8
Africa	2,015	1,555	230	812	334	0	468	4,120	766	383	1,125	166	8,404	440.5
Eurasian Economic Union	583	583	0	0	0	124	0	0	0	0	0	0	124	-78.7
South Asia	35,161	35,161	0	0	88	88	7,445	3,055	88	0	0	0	10,764	-69.4
China	52,076	37,574	2,409	4,594	4,094	3,600	498	1,102	7,972	6,685	6,392	7,091	44,437	18.3
Poland	62,051	52,191	4,316	6,223	5,988	6,271	5,137	5,184	6,689	6,461	6,708	6,305	59,282	13.6
Israel	768	768	0	0	0	230	0	198	0	456	370	239	1,493	94.4
Lithuania	5,324	4,653	274	676	475	88	157	71	65	88	255	220	2,369	-49.1
Kenya	0	0	0	0	0	0	0	120	0	0	120	166	406	∞
Romania	390	170	49	48	0	0	0	0	46	407	23	144	717	321.8
Slovakia	183	137	23	23	70	69	0	47	72	0	24	48	376	174.5
Germany	0	0	0	0	0	0	0	0	0	0	0	23	23	∞
Czech Republic	117	45	73	25	0	0	0	0	0	0	0	23	121	168.9
United Kingdom	2,253	1,020	237	0	0	161	220	276	0	0	0	22	916	-10.2
Russia	1	1	0	0	0	0	0	0	0	0	0	0	0	-100.0
Saudi Arabia	5,869	5,869	0	0	0	0	0	3,755	505	4,000	2,000	0	10,260	74.8
Singapore	0	0	0	0	0	149	99	0	0	0	0	0	248	∞
Spain	500	500	0	0	0	0	0	0	0	0	0	0	0	-100.0
Switzerland	298	0	266	0	0	0	0	0	0	0	0	0	266	∞
Turkey	0	0	0	0	0	0	0	0	0	0	24	0	24	∞
United Arab Emirates	2,638	1,056	0	0	0	0	5,483	1,533	2,497	0	0	0	9,513	800.9
Madagascar	264	264	0	0	0	0	0	0	0	0	0	0	0	-100.0
Malaysia	1,747	1,747	307	0	0	0	0	0	299	303	0	0	909	-48.0
Morocco	0	0	0	0	0	0	0	4,000	0	0	0	0	4,000	∞
Nepal	549	549	0	0	0	0	0	0	0	0	0	0	0	-100.0
Netherlands	5	5	0	0	0	0	0	0	0	0	0	0	0	-100.0
Oman	0	0	0	0	0	0	1,000	0	0	0	0	0	1,000	∞
Philippines	0	0	0	Philippines	0	0	0	0	0	0	0	0	0	∞
Denmark	0	0	0	0	0	0	0	0	213	0	0	0	213	∞
Djibouti	690	230	230	0	0	0	230	0	0	0	0	0	460	100.0
Ethiopia	1,061	1,061	0	812	334	0	238	0	766	383	1,005	0	3,538	233.5
Cyprus	88	0	177	0	116	0	0	110	166	24	48	0	641	∞
Bangladesh	7,059	7,059	0	0	0	0	0	0	0	0	0	0	0	-100.0
Belarus	582	582	0	0	0	124	0	0	0	0	0	0	124	-78.7
Hong Kong	48	48	0	0	0	0	0	0	0	263	0	0	263	447.9
India	27,552	27,552	0	0	88	88	7,445	3,055	88	0	0	0	10,764	-60.9
Iran	2,874	2,874	0	0	0	0	0	0	0	0	0	0	0	-100.0
Korea South	0	0	0	0	0	0	0	0	50	0	0	0	50	∞
Kuwait	0	0	0	0	0	503	503	0	0	2,000	0	0	3,006	∞
Lebanon	1,100	1,100	0	0	0	0	0	0	0	0	0	0	0	-100.0
United States	0	0	0	0	0	0	0	0	1	0	0	0	1	∞
Vietnam	740	740	215	0	0	0	0	0	0	0	0	0	215	-70.9
Virgin Islands (British)	0	0	518	0	0	0	0	0	0	0	0	0	518	∞
Yemen	220	220	0	0	0	214	0	0	192	192	0	0	598	171.8

Source: State Fiscal Service of Ukraine

Soybean Meal Export Statistics by Month and Destination, Ukraine, MT (HS 2304)

Destination	MY 2016/17	Sep 2016- Jun 2017	Sep-17	Oct-17	Nov-17	Dec-17	Jan-18	Feb-18	Mar-18	Apr-18	May-18	Jun-18	Sep 2017 - June 2018	% Change Sep 2017 - Jun 2018 to Sep 2016 - Jun 2017
World	297,179	266,477	13,187	19,299	34,192	37,577	33,472	35,902	32,268	54,328	19,120	33,235	312,580	17.3
EU-28	108,347	92,694	3,678	8,654	11,562	10,334	9,273	11,799	13,961	12,397	5,042	8,870	95,570	3.1
Middle East	94,423	87,843	3,910	2,897	11,911	9,758	5,784	10,249	4,983	15,102	9,983	8,677	83,254	-5.2
Africa	15,607	15,607	0	0	0	0	5,660	3,084	0	9,209	0	8,225	26,178	67.7
Eurasian Economic Union	55,704	51,406	4,462	5,947	10,091	16,144	10,546	10,012	10,938	15,804	1,889	6,262	92,095	79.2
East & Southeast Asia	493	493	0	0	0	0	0	0	0	0	0	0	0	-100.0
Libya	15,564	15,564	0	0	0	0	5,660	3,084	0	9,209	0	8,225	26,178	68.2
Belarus	55,704	51,406	4,462	5,947	8,612	16,144	10,546	9,012	10,938	15,804	1,889	6,262	89,616	74.3
Hungary	71,994	58,701	2,506	4,754	8,670	7,240	4,897	6,694	8,104	5,239	2,872	5,010	55,986	-4.6
Georgia	39,021	35,777	1,694	669	7,678	5,801	77	3,183	223	4,276	4,458	3,736	31,795	-11.1
Turkey	26,935	26,935	0	0	0	102	0	625	0	1,307	1,291	2,941	6,266	-76.7
Poland	11,333	9,501	885	2,374	2,276	2,677	2,360	1,866	3,346	5,277	1,642	2,285	24,988	163.0
Azerbaijan	13,751	10,415	2,216	2,228	2,754	3,855	607	5,440	4,760	9,518	4,235	2,000	37,613	261.1
Romania	22	22	0	976	0	0	1,489	2,557	1,565	1,005	0	981	8,573	38,868.2
Moldova	17,347	13,895	1,137	1,676	1,541	1,091	1,508	1,759	1,693	1,504	2,145	950	15,004	8.0
Lithuania	3,166	2,946	22	462	506	242	352	528	770	568	308	352	4,110	39.5
Turkmenistan	5,258	4,538	0	125	566	250	701	0	567	313	61	250	2,833	-37.6
Estonia	1,870	1,562	264	88	110	176	176	154	176	308	220	242	1,914	22.5
France	18,668	18,668	0	0	0	0	0	0	0	0	0	0	0	-100.0
Armenia	0	0	0	0	1,479	0	0	1,000	0	0	0	0	2,479	∞
Israel	5,038	5,038	0	0	0	0	0	0	0	0	0	0	0	-100.0
Korea South	493	493	0	0	0	0	0	0	0	0	0	0	0	-100.0
Latvia	22	22	0	0	0	0	0	0	0	0	0	0	0	-100.0
Lebanon	9,668	9,668	0	0	0	0	5,100	0	0	0	0	0	5,100	-47.2
Mauritius	43	43	0	0	0	0	0	0	0	0	0	0	0	-100.0
Oman	10	10	0	0	0	0	0	0	0	0	0	0	0	-100.0
Slovakia	22	22	0	0	0	0	0	0	0	0	0	0	0	-100.0
Spain	1,248	1,248	0	0	0	0	0	0	0	0	0	0	0	-100.0
Uzbekistan	0	0	0	0	0	0	0	0	126	0	0	0	126	∞

Source: State Fiscal Service of Ukraine

Soybean Meal Import Statistics by Month and Origin, Ukraine, MT (HS 2304)

Destination	MY 2016/17	Sep 2016- Jun 2017	Sep-17	Oct-17	Nov-17	Dec-17	Jan-18	Feb-18	Mar-18	Apr-18	May-18	Jun-18	Sep 2017 - June 2018	% Change Sep 2017 - Jun 2018 to Sep 2016 - Jun 2017
World	2,026	1,885	13	179	197	393	436	132	673	280	246	202	2,751	45.9
Eurasian Economic Union	0	0	0	0	0	0	249	0	315	0	0	128	692	∞
EU-28	864	815	0	51	81	126	111	69	97	76	45	49	705	-13.5
East & Southeast Asia	1,053	997	5	128	100	267	76	48	262	204	201	24	1,315	31.9
Belarus	0	0	0	0	0	0	249	0	315	0	0	128	692	∞
Netherlands	0	0	0	0	22	0	53	0	22	22	15	26	160	∞
China	1,053	997	5	128	100	267	76	48	262	204	201	24	1,315	31.9
Denmark	800	797	0	5	59	126	58	47	75	10	30	24	434	-45.5
Brazil	7	7	0	0	0	0	0	0	0	0	0	0	0	-100.0
Poland	42	0	0	46	0	0	0	22	0	44	0	0	112	∞
Serbia	104	67	8	0	17	0	0	15	0	0	0	0	40	-40.3
Slovakia	4	0	0	0	0	0	0	0	0	0	0	0	0	∞
Spain	18	18	0	0	0	0	0	0	0	0	0	0	0	-100.0

Source: State Fiscal Service of Ukraine