

**Voluntary Report** – Voluntary - Public Distribution

**Date:** April 21, 2023

**Report Number:** JA2023-0034

**Report Name:** Updated Guide to New Phytosanitary Certificate  
Requirements of Japan

**Country:** Japan

**Post:** Tokyo

**Report Category:** Sanitary/Phytosanitary/Food Safety

**Prepared By:** Tomohiro Kurai

**Approved By:** Mariya Rakhovskaya

**Report Highlights:**

From August 5, 2023, Japan will begin to strictly require phytosanitary certificates (PC) for a broad range of previously exempted agricultural imports. This report aims to provide additional details on Japan's new PC requirements.

## General

On August 5, 2020, Japan's Ministry of Agriculture, Forestry and Fisheries (MAFF) revised the Ordinance for Enforcement of the [Plant Protection Act](#)<sup>1</sup>, which stipulates quarantine regulations for agricultural imports to Japan as well as the list of phytosanitary certificate (PC) exemptions in the Article 5-3. As notified in the World Trade Organization (WTO) notification ([G/SPS/N/JPN/684/Add.1](#)), Japan provided a 3-year transition period (through August 4, 2023<sup>2</sup>) for full compliance (see [JA2020-0171](#)).

Appendix 1 offers guidance on Japan's PC requirements for imported products under the revised Ordinance for Enforcement of the Plant Protection Act Japan. FAS Tokyo advises U.S. exporters to consult with Japanese quarantine offices through their contracted importers to confirm Japan's import requirements for specific products.

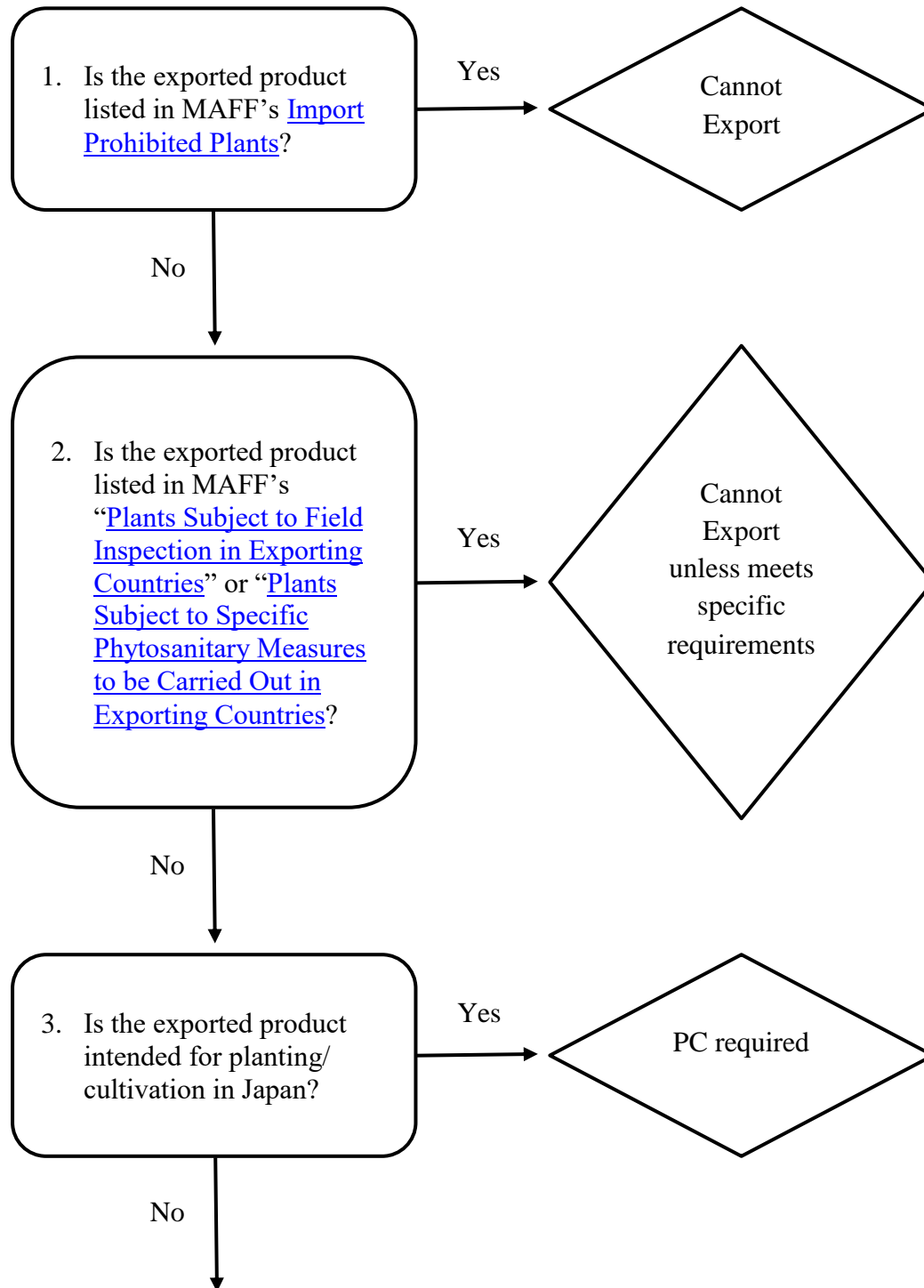
---

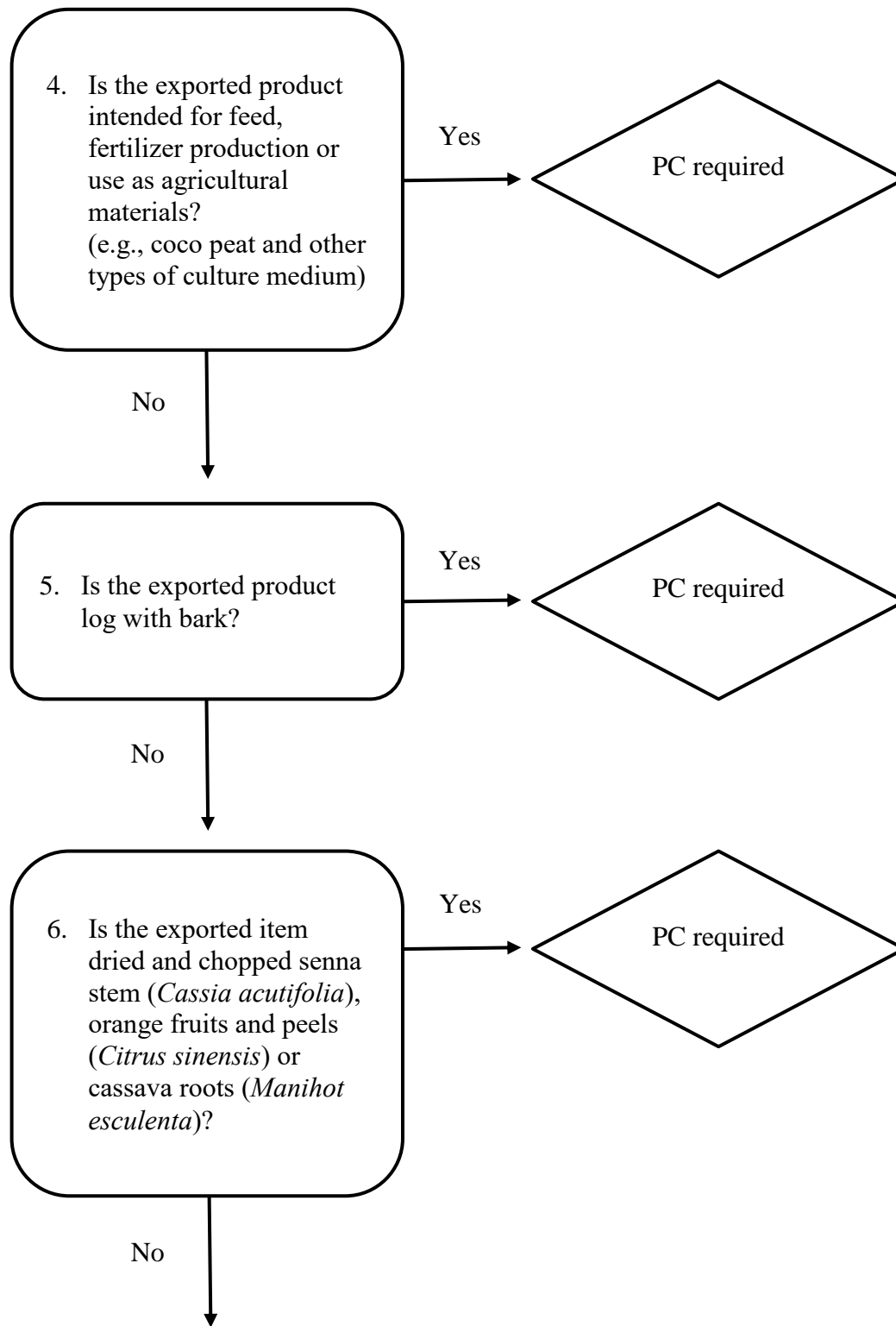
<sup>1</sup> The Government of Japan last updated the official translation of the Plant Protection Act in 2009 so this translation does not reflect revisions since 2009.

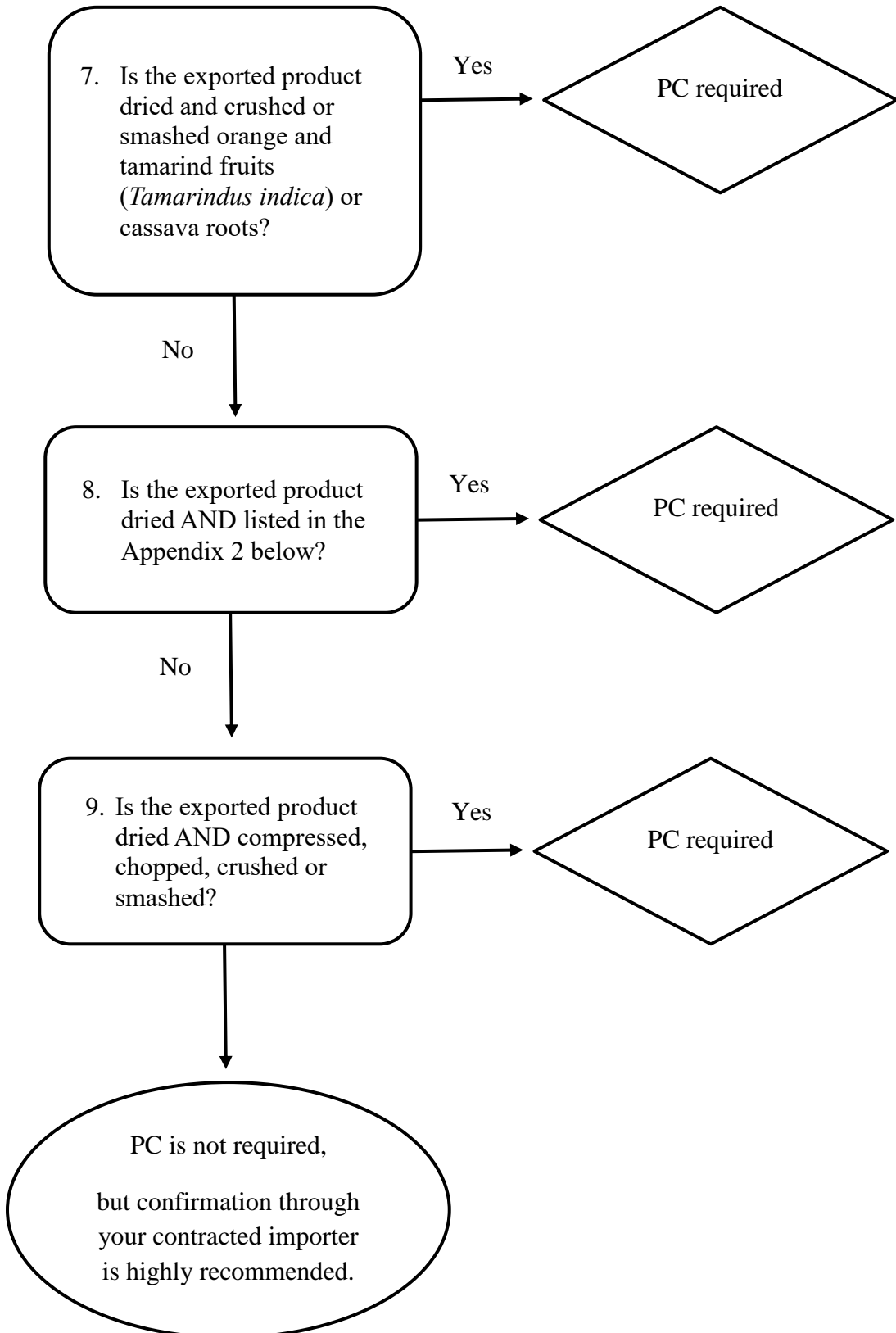
<sup>2</sup> Japan published the Ordinance for Enforcement of the Plant Protection Act in the Official Gazette on August 5, 2020 with an immediate effect and a 3-year of transition period.

## Appendix 1. Flow charts to determine PC requirements

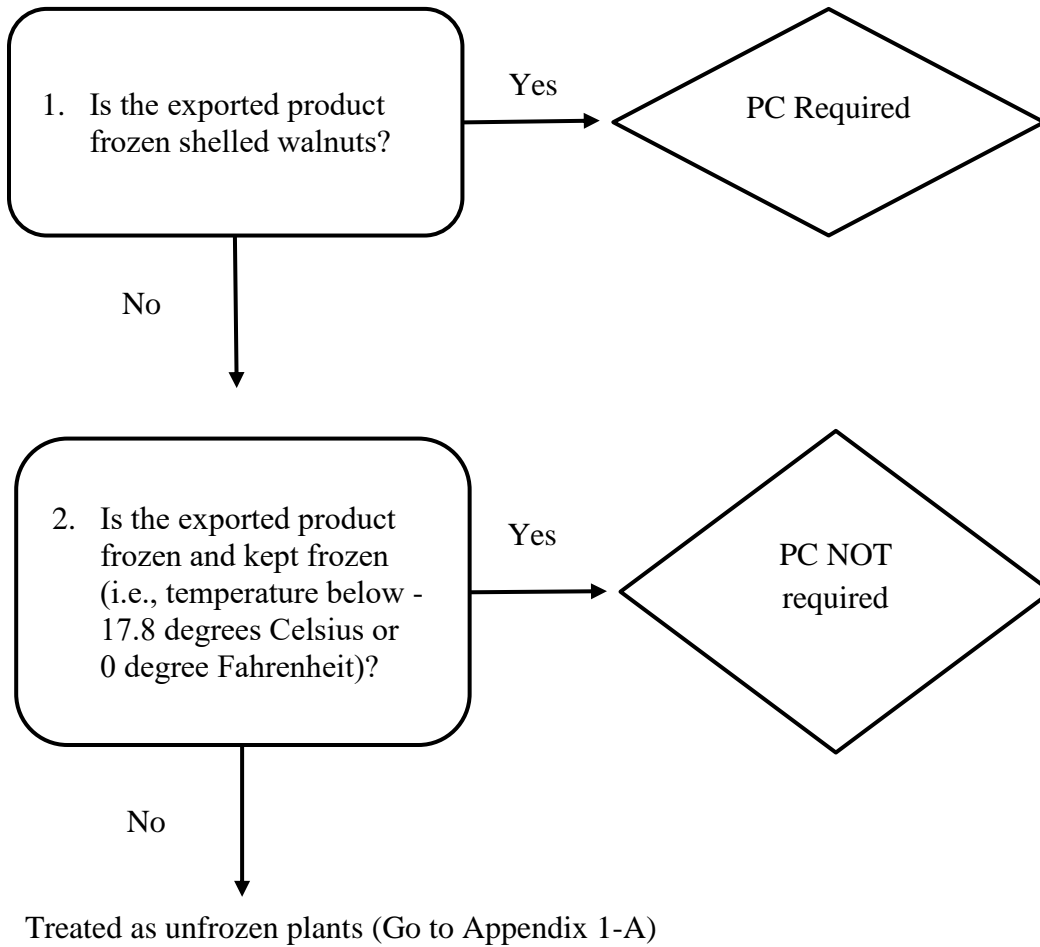
### A) Non-frozen products







B) Frozen products



## Appendix 2. List of species and plant parts that require PC under any circumstance

<i>Pinus pinea</i>	Leaf, branch and bark
<i>Eucalyptus stuartiana</i>	Leaf, branch, flower and fruit
<i>Eucalyptus viminalis</i>	Leaf, branch, flower and fruit
Egoma ( <i>Perilla ocymoides</i> )	Seed
Cacao ( <i>Theobroma cacao</i> )	Seed
<i>Castanea crenata</i>	Chestnut (excluding peeled chestnut)
Bubinga ( <i>Guibourtia pellegriniana</i> )	Bark
Walnut ( <i>Juglans</i> )	Shelled walnut
Coriander ( <i>Coriandrum sativum</i> )	Leaf and seed
Peruvian pepper ( <i>Schinus molle</i> )	Leaf, branch, flower and fruit
Sesame ( <i>Sesamum indicum</i> )	Seed
Pomegranate ( <i>Punica granatum</i> )	Fruit
Sugar pine ( <i>Pinus lambertiana</i> )	Leaf, branch and bark
<i>Cryptomeria japonica</i>	Fruit
Rapeseed ( <i>Brassica napus</i> ssp. <i>Oleifera</i> )	Seed
Senna ( <i>Cassia acutifolia</i> )	Leaf
Tamarind ( <i>Tamarindus indica</i> )	Fruit
<i>Castanea mollissima</i>	Chestnut (excluding peeled chestnut)
<i>Jatropha curcas</i>	Seed
Black cumin ( <i>Nigella sativa</i> )	Seed
<i>Cyperus rotundus</i>	Leaf and stem
<i>Pinus maritima</i>	Leaf, branch and bark
Caraway ( <i>Carum carvi</i> )	Seed
Brazil nut tree ( <i>Bertholletia excelsa</i> )	Nut (excluding peeled nut)

<i>Carthamus tinctorius</i>	Flower and seed
<i>Ocimum basilicum</i>	Leaf and seed
<i>Terminalia catappa</i>	Leaf, branch and flower
<i>Juniperus communis</i>	Fruit
Common beech ( <i>Fagus sylvatica</i> )	Leaf, branch and flower
Horse radish tree ( <i>Moringa oleifera</i> )	Leaf and fruit
Chenopodiaceae	Seed
Gramineae	Seed (excluding malt)
Polygonaceae	Seed
Amaranthaceae	Seed
Leguminosae	Seed

**Attachments:**

No Attachments.